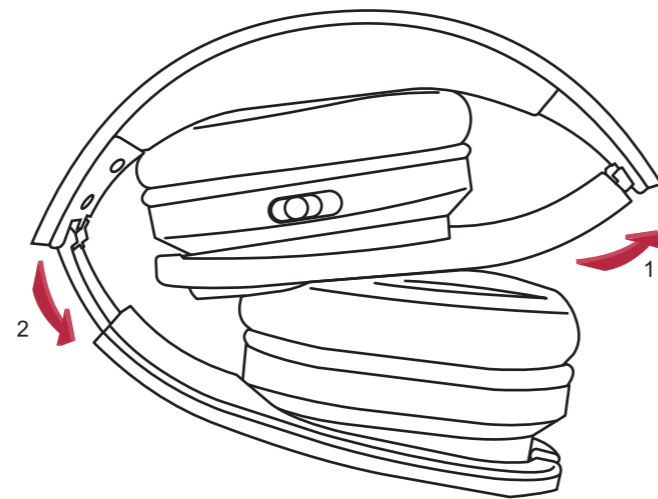




5



Recommended Maximum SPL Exposure Per Day (see chart):  
**90dB** 8 Hours      **95dB** 4 Hours  
**100dB** 2 Hours      **105dB** 1 Hours  
**110dB** 30 Minutes      **115dB** 15 Minutes  
**120dB** Avoid as Damage May Occur

Niveau d'exposition de pression acoustique maximum recommandé quotidien (voir le tableau)  
**90 dB** 8 heures      **95 dB** 4 heures  
**100 dB** 2 heures      **105 dB** 1 heure  
**110 dB** 30 minutes      **115 dB** 15 minutes  
**120 dB** À éviter, car cela peut endommager l'ouïe

Exposición máxima recomendada (SPL) por día (ver gráfico):  
**90 dB** 8 horas      **95 dB** 4 horas  
**100 dB** 2 horas      **105 dB** 1 horas  
**110 dB** 30 minutos      **115 dB** 15 minutos  
**120 dB** Evítese porque puede producir lesiones

Empfehlungen bzgl. maximaler Schallpegelexposition pro Tag (siehe Diagramm):  
**90dB** 8 Stunden      **95dB** 4 Stunden  
**100dB** 2 Stunden      **105dB** 1 Stunde  
**110dB** 30 Minuten      **115dB** 15 Minuten  
**120dB** Wegen etwaiger Schadensgefahr zu vermeiden

For additional support with your headphones please visit the PSB Lounge at [www.psbSpeakers.com/lounge](http://www.psbSpeakers.com/lounge)  
Please download the full multi-language Owner's Manual from [www.psbSpeakers.com/products/headphones](http://www.psbSpeakers.com/products/headphones)

This device complies with Part 15 of the FCC Rules. Operation is subject to the following two conditions: (1) this device may not cause harmful interference, and (2) this device must accept any interference received, including interference that may cause undesired operation.

©PSB Speakers. All rights reserved.

PSB QSG-M4U2 Rev 2 1118

# M4U 2

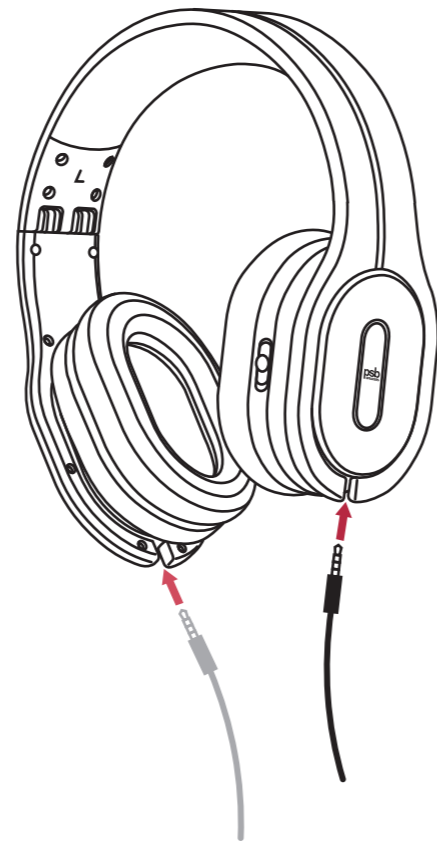
## Quick Start Guide



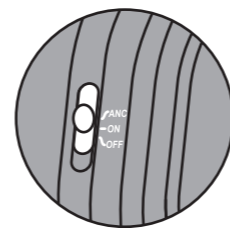
1



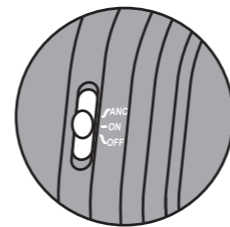
2



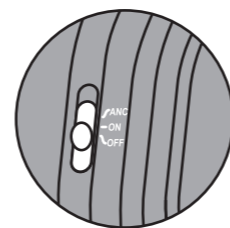
3




Active Mode with Noise Cancelling (GREEN LED)  
 Mode actif avec suppression du bruit (DEL VERTE)  
 Modo activo con cancelación de ruido (LED VERDE)  
 Aktiver Modus mit Geräuschunterdrückung (GRÜNE LED)

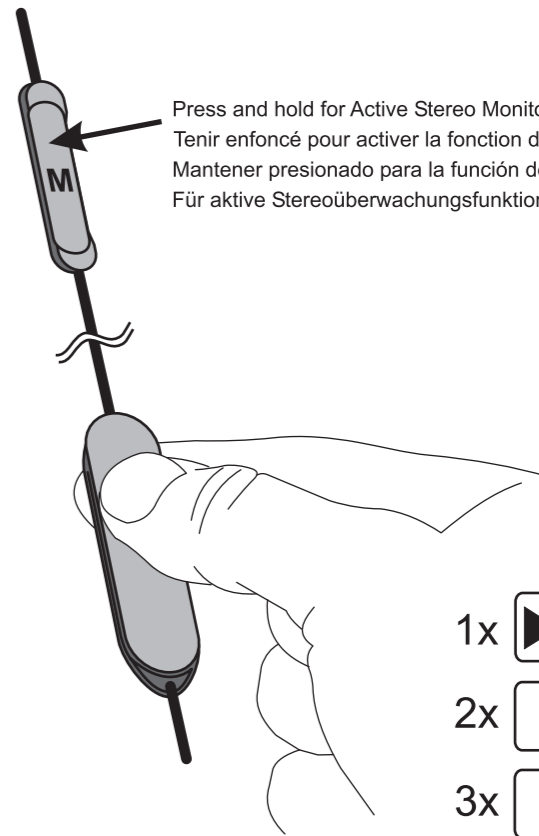


Active Mode (RED LED)  
 Mode actif (DEL ROUGE)  
 Modo activo (LED ROJO)  
 Aktiver Modus (ROTE LED)



Passive Mode   
 Mode passif  
 Modo pasivo  
 Passiver Modus

4



Press and hold for Active Stereo Monitor Function  
 Tenir enfoncé pour activer la fonction de contrôle stéréo actif  
 Mantener presionado para la función de monitor activo del estéreo  
 Für aktive Stereoüberwachungsfunktion gedrückt halten

